

SCISSORS STAND KIT FOR HAMMERED DULCIMER

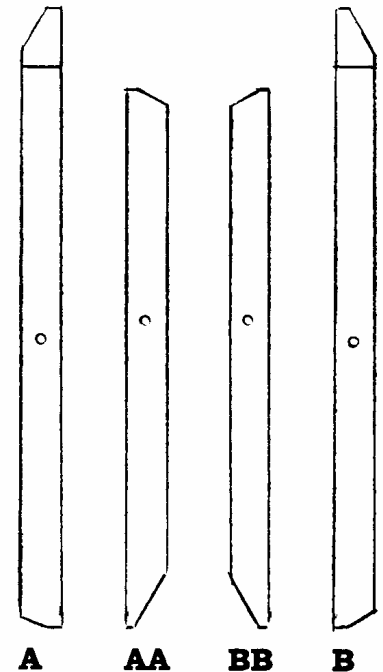
WOOD PARTS:

- A Left long leg
- AA Left short leg
- B Right long leg
- BB Right short leg



HARDWARE:

- 2 Flat hinges, 2" X 1-3/8"
- Screws for hinges
- 2 Swivel hinges, 1/2" dia
- 2 Dowels, 3/8" X 2"
- 2 Nylon Webbing strips, 1/2" wide
(20-1/2" for tall stand)
(18" for short stand)
- 2 Screws (3/4" #6) with cap washers
- 1 Rubber tubing (3/8" X 3")



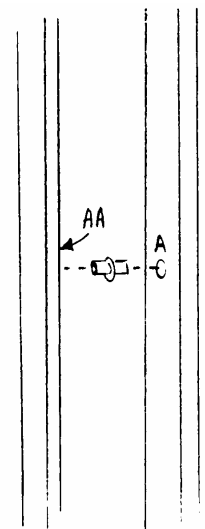
CAUTION: The wood parts of this kit are so similar that it is difficult to identify right from left. **Carefully lay out the pieces according to the diagram and then mark each piece as shown.** *If you assemble these pieces incorrectly your stand will not work.*

ASSEMBLY INSTRUCTIONS:

____1. Use medium (150 grit) sandpaper to sand all four legs, removing the sharp corners of the wood so the parts feel smooth to the touch. Be careful not to sand off the penciled letters that identify each part -- you will need to rely on those for proper assembly.

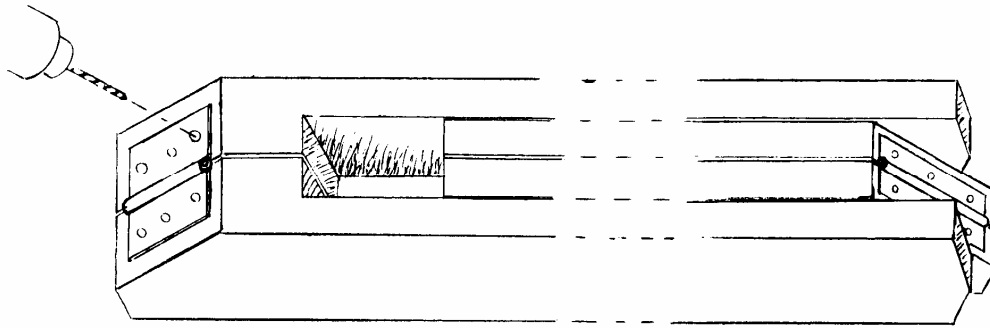
____2. Apply the finish of your choice to the four legs. You may simply wipe a coat of oil (Danish, Tung, Linseed) to seal the wood, or you may apply one or two coats of varnish or lacquer. A satin polyurethane would look good and give excellent protection against moisture. If you wish to darken the color of the wood, you'll need to apply a stain first, then your finish coats of oil, varnish or lacquer.

____3. When the finish is dry, arrange the parts as illustrated above. You will join leg A to leg AA and leg B to leg BB by pushing them together with the swivel hinges in the holes between them. Use a toothpick or nail to apply some glue to the walls of the holes first, then use a block of wood and a hammer to pound the parts together completely.

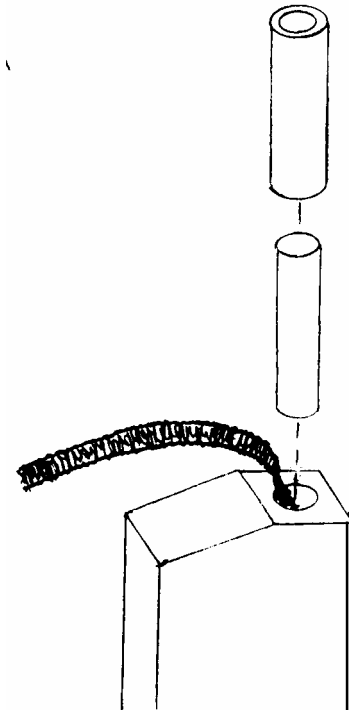


____4. Place the two sets of legs side-by-side and install the two flat

hinges as shown. You will need to drill 3/32" pilot holes for the hinge screws first.



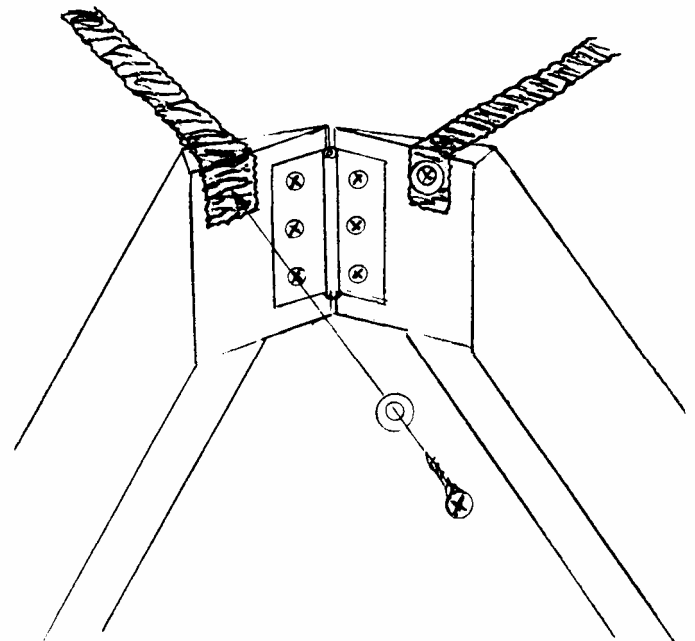
___ 5. Insert one end of each webbing length into the hole at the end of each short leg, and tap a dowel into the hole to secure the webbing. Put some glue in the hole to achieve a permanent fit. Then cut the rubber tubing in half and slip one piece over each dowel for padding to protect your instrument.



NOTE: You will need to "pucker" the webbing in order to fit it into the hole. Take care to orient the webbing on the side of the hole toward the angled cut in the leg, as shown.

___ 6. Now you can stand up the parts and fasten the opposite end of the webbing strips to the long legs. Drill 3/32" pilot holes for the mounting screws, then install each webbing strip with one screw and cup washer, as shown.

Note: If you have assembled the shorter (25") stand for playing from a seated position, you will want to use a 24" stool to sit at the proper height.



MUSICMAKER'S KITS, INC.

PO BOX 2117
STILLWATER, MN 55082-3117

(651) 439-9120
email: info@musikit.com